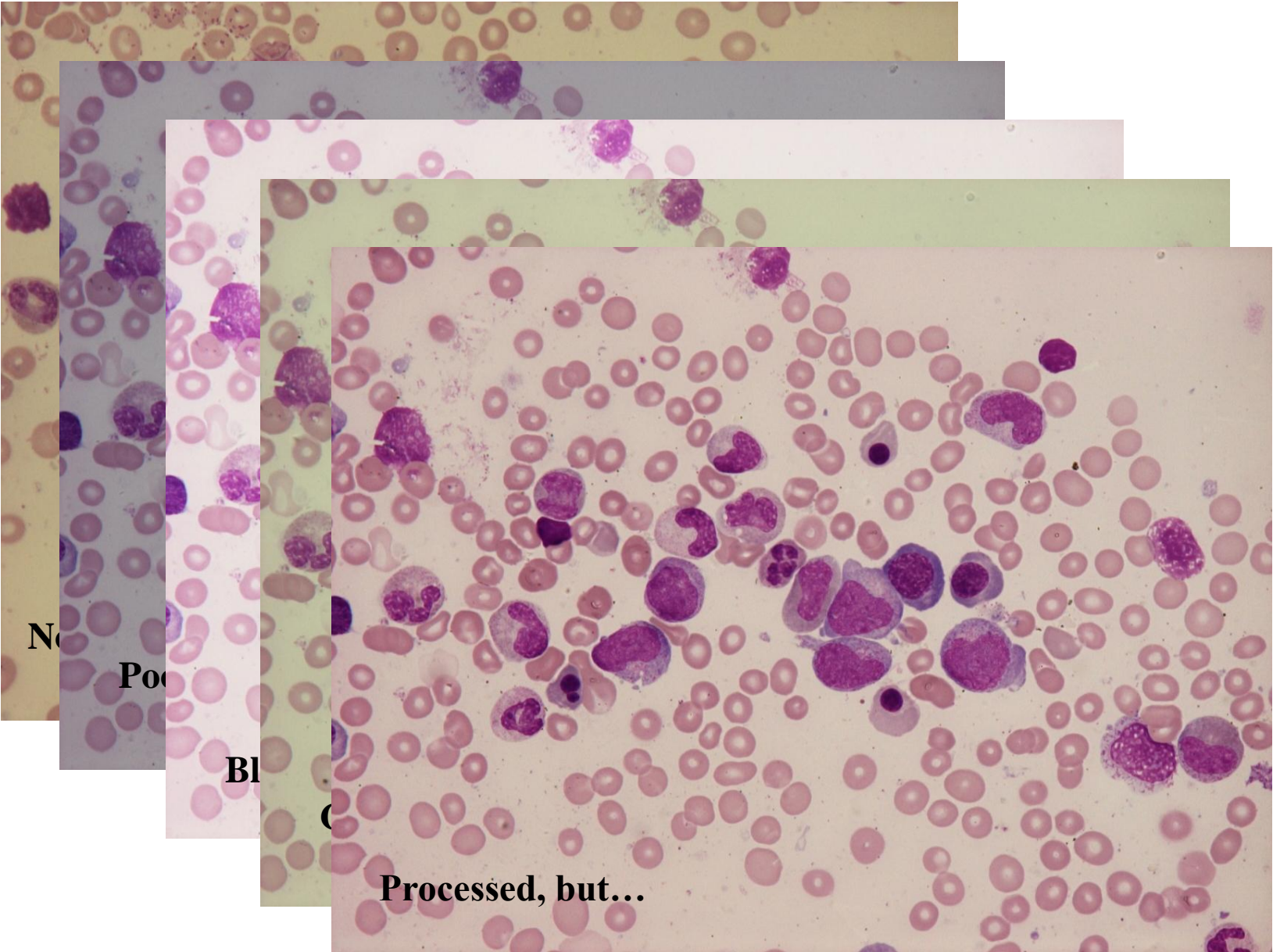


Colour balance

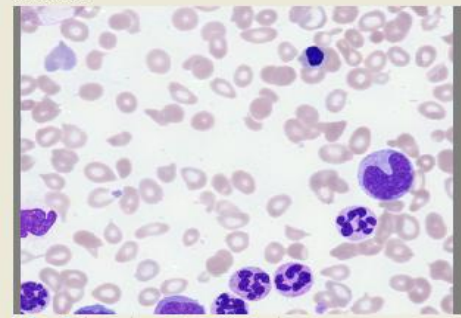


Live image

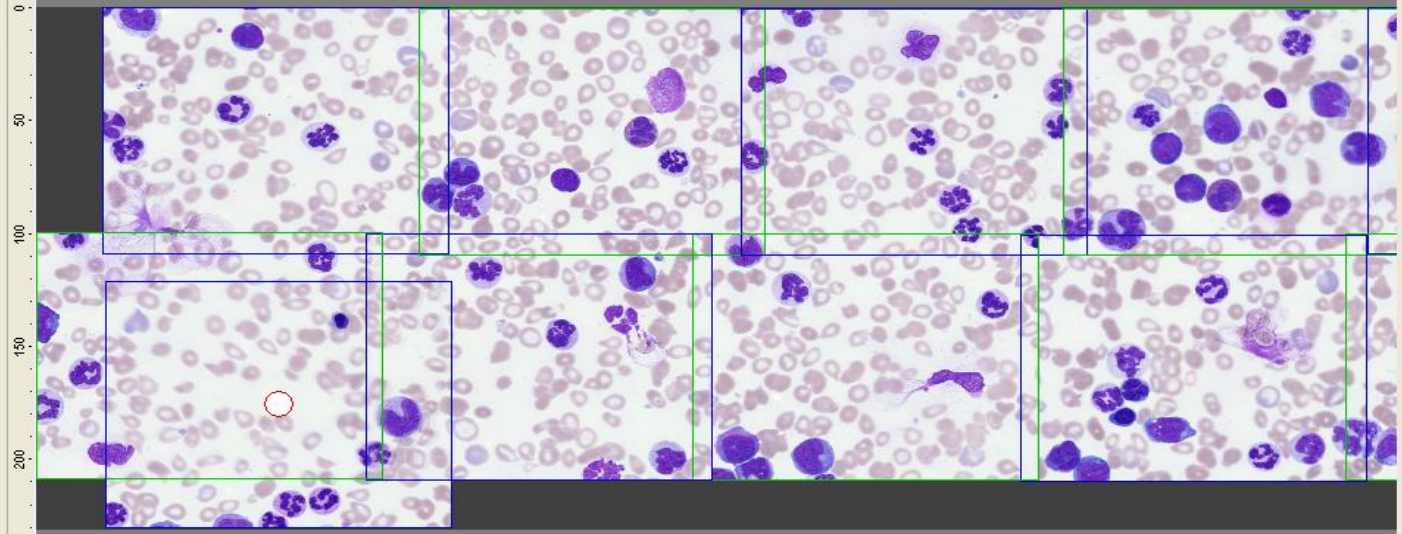
Image name

MD-Experiment-0002

New ...



Photographed images overlapping before stitch



Active Window

Microscope and camera
Stage | Focus | Exposure Time

Stage

Position X [μm]: -10068.016 Position Y [μm]: 240.785

Distance X [μm]: -10068.016 Distance Y [μm]: 240.785

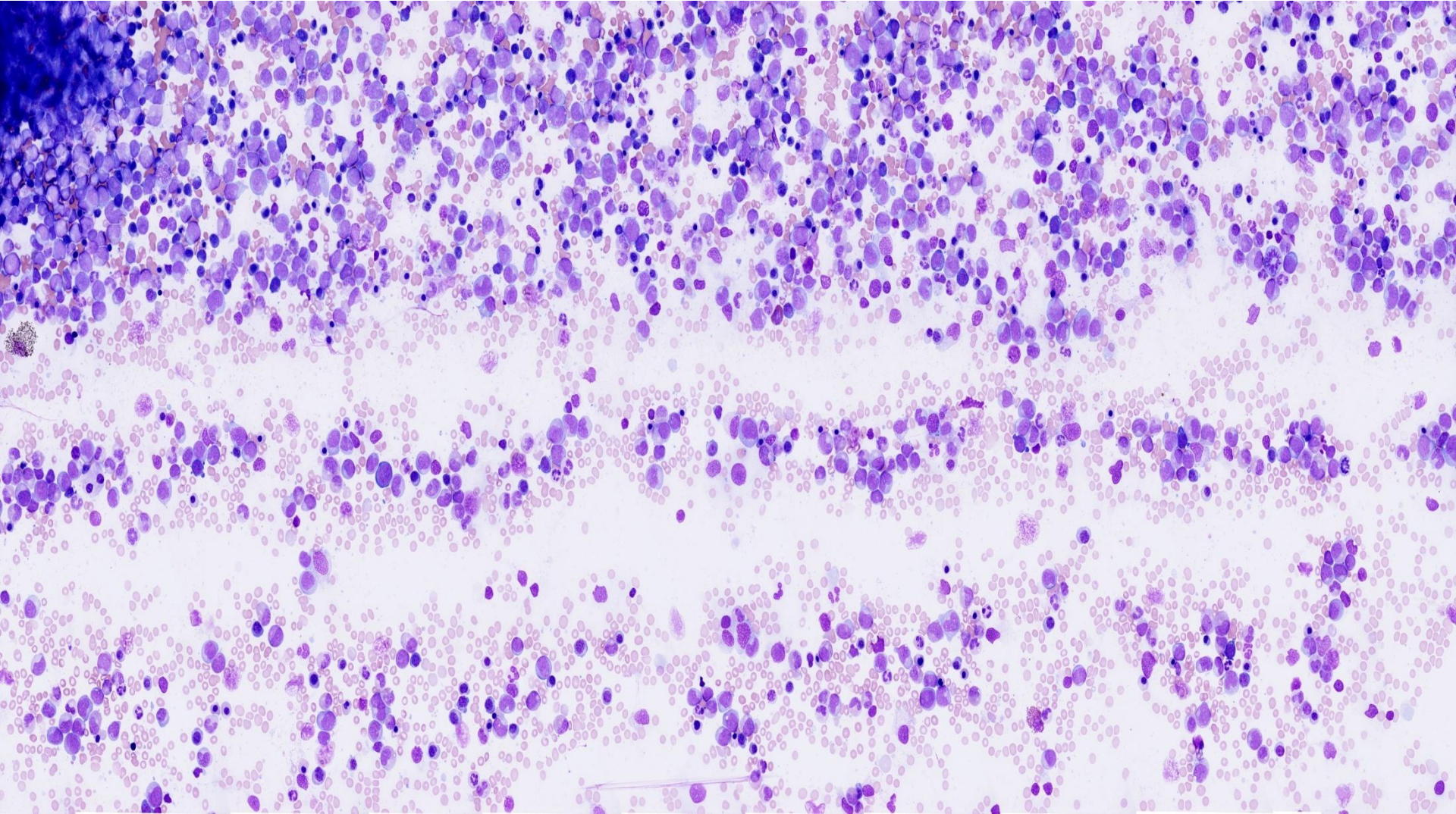
Home Measure

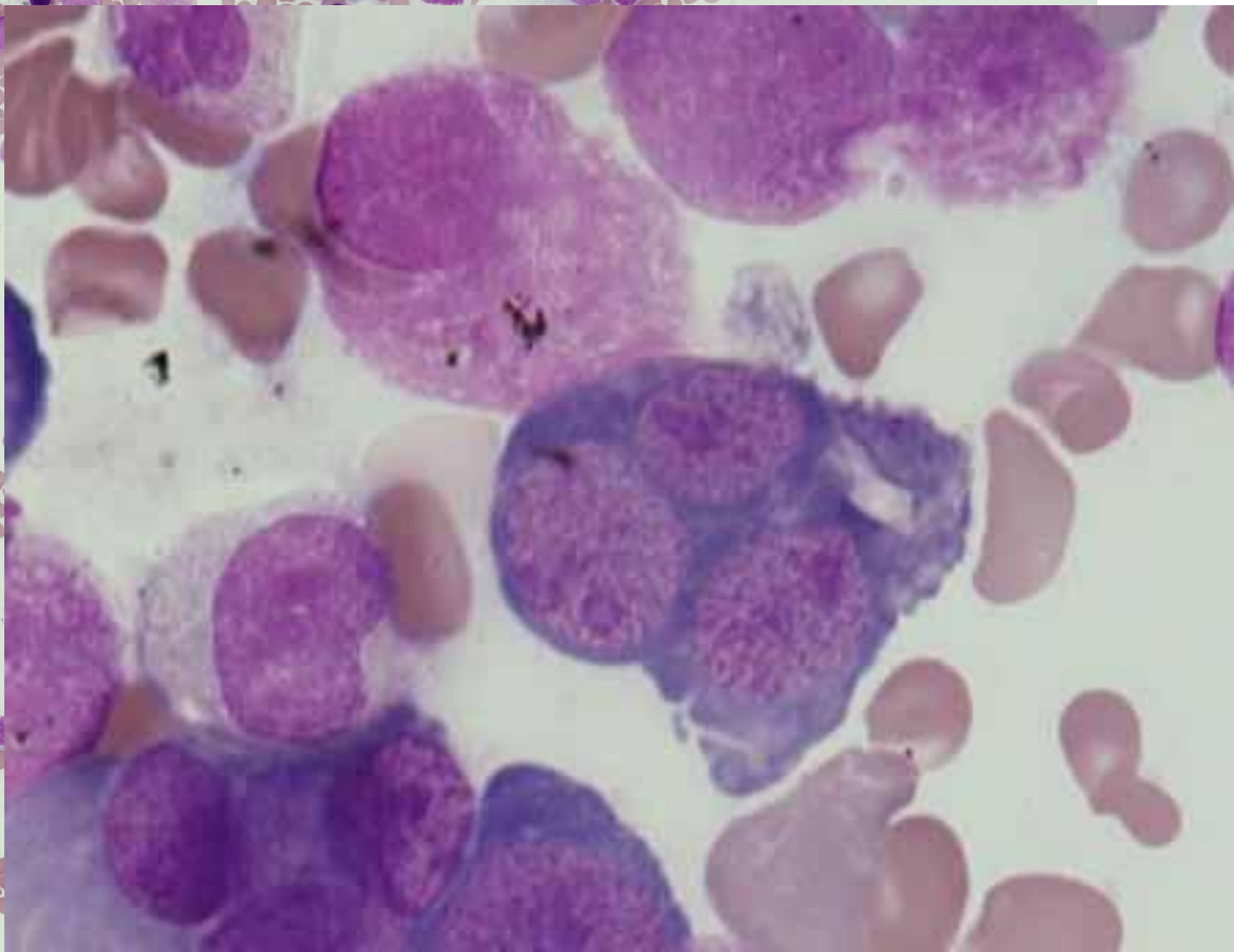
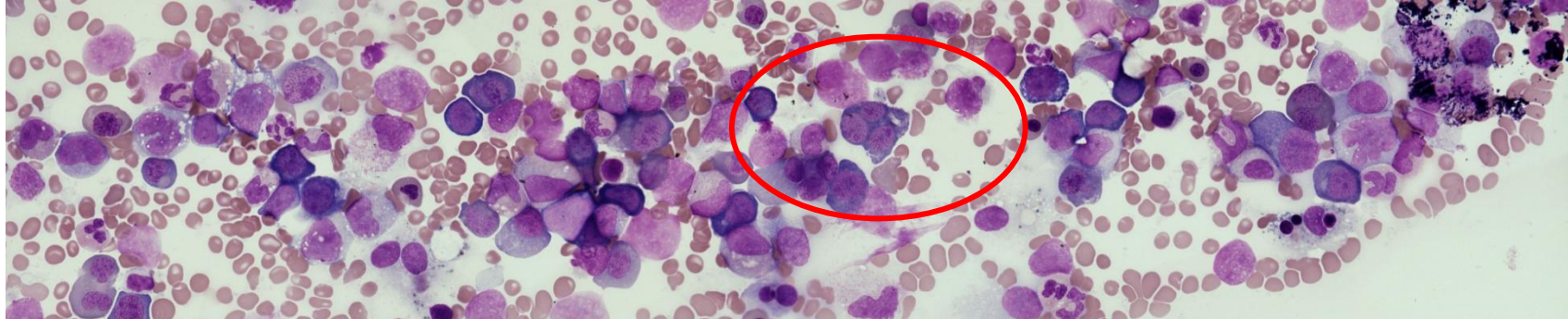
Set 0 Position:
Auto Man



Microscope Sc

OK Cancel





Username

Login

Password [forgot details?](#)**Laboratory Managers**

To register 2 or more staff in your organisation

[Click here to register](#)[Click here to renew/login](#)**Individuals**

To register as an individual practitioner

[Click here to register](#)[Click here to renew/login](#)**Agents**

UK NEQAS (H) recognised agents for non-UK laboratories only

[Click here to register](#)[Click here to login](#)**Activate your user account**

If you have an Activation Key and would like to access the scheme, click the link below and follow the instructions.



Activate

UK NEQAS General Haematology

Welcome to the UK NEQAS programme for the development of laboratory haematology staff

The Digital Morphology CPD programme is available anywhere in the world.

Note: The closing date for the current year is 31st March 2024.

Click [here](#) to view the CPD programme details.

For more information please contact:

or contact:

UK NEQAS (H) Scheme Co-ordinator
UK NEQAS (H)
PO Box 14, Watford, WD18 0FJ
UK

Fax: +44 (0)1923 217879

Email: ghadmin@uknegas.org.uk

- Most participants register via their laboratory manager
- Aim is to support Continuing Professional Development.
- Participant result data is entirely confidential.
- Eight cases per year.
- Now has more than 1500 individuals registered.

UK NEQAS (H) Digital Morphology Scheme CPD Modules

Icon	Name	Description
	0801DM	This CPD Module is closed and you did not participate. You can still click through on the folder to see information about the CPD case
	0802DM	This CPD Module is closed and you did not participate. You can still click through on the folder to see information about the CPD case
	0803DM	This CPD Module is closed and you did not participate. You can still click through on the folder to see information about the CPD case
	0803DM	This CPD Module is closed and you did not participate. You can still click through on the folder to see information about the CPD case
	0804DM	This CPD Module is closed and you did not participate. You can still click through on the folder to see information about the CPD case
	0805DM	This CPD Module is closed and you did not participate. You can still click through on the folder to see information about the CPD case
	0901DM	This CPD Module is closed and you did not participate. You can still click through on the folder to see information about the CPD case
	0901DM	This CPD Module is closed and you did not participate. You can still click through on the folder to see information about the CPD case
	0902DM	This CPD Module is closed and you did not participate. You can still click through on the folder to see information about the CPD case
	0903DM	This CPD Module is closed and you did not participate. You can still click through on the folder to see information about the CPD case
	0904DM	This CPD Module is closed and you did not participate. You can still click through on the folder to see information about the CPD case
	0905DM	This CPD Module is closed. You can click through on the folder to generate your certificate and to review the case.
	0906DM	This CPD Module is closed. You can click through on the folder to generate your certificate and to review the case.
	1001DM	
	1002DM	This CPD Module is closed. You can click through on the folder to generate your certificate and to review the case.
	1003DM	This CPD Module is closed. You can click through on the folder to generate your certificate and to review the case.

Case selected for morphological content.
 Must offer something to all levels.
 Agreed by an expert group.
 Tested by the expert group.
 Contain sufficient features for image size.
 Represent real life laboratory situations.
 Offer educational element.