



EQA in pre-analytics 8 years of experience

extract of presentation given at SSCC GA 2014



EQA do survey mostly the analytical phase

- Only a small number of pre-analytical errors can be revealed by this surveys:
errors in storage, inversion of probes, homogenisation, \tilde{o}
 - Only a small number of post-analytical errors can be revealed by this surveys:
inversion of results, false units, decimal errors, \tilde{o}
- Awareness of the importance of the peri-analytics



EQA for pre- and post analytical phases

- ” Launch 2007
- ” Multiple-choice questionnaire (MCQ) - twice a year
- ” 10 questions in 2 parts
 - ▶ Part I : general domains of laboratory analysis
 - ▶ Part II: specialised domains
- ” Evaluation on 5 or 10 questions
- ” Sample (2 surveys)
- ” Free of charge for CSCQ-members



Questionnaire

Preparation (CSCQ collaborator or member, FAMH student, ò)



Control by CSCQ (scientific level, wording, standardisation, ...)



Validation by experts in the different specific fields



Translation (F / D / I)

Results submission

Exclusively on the Web

Simple click on checkboxes

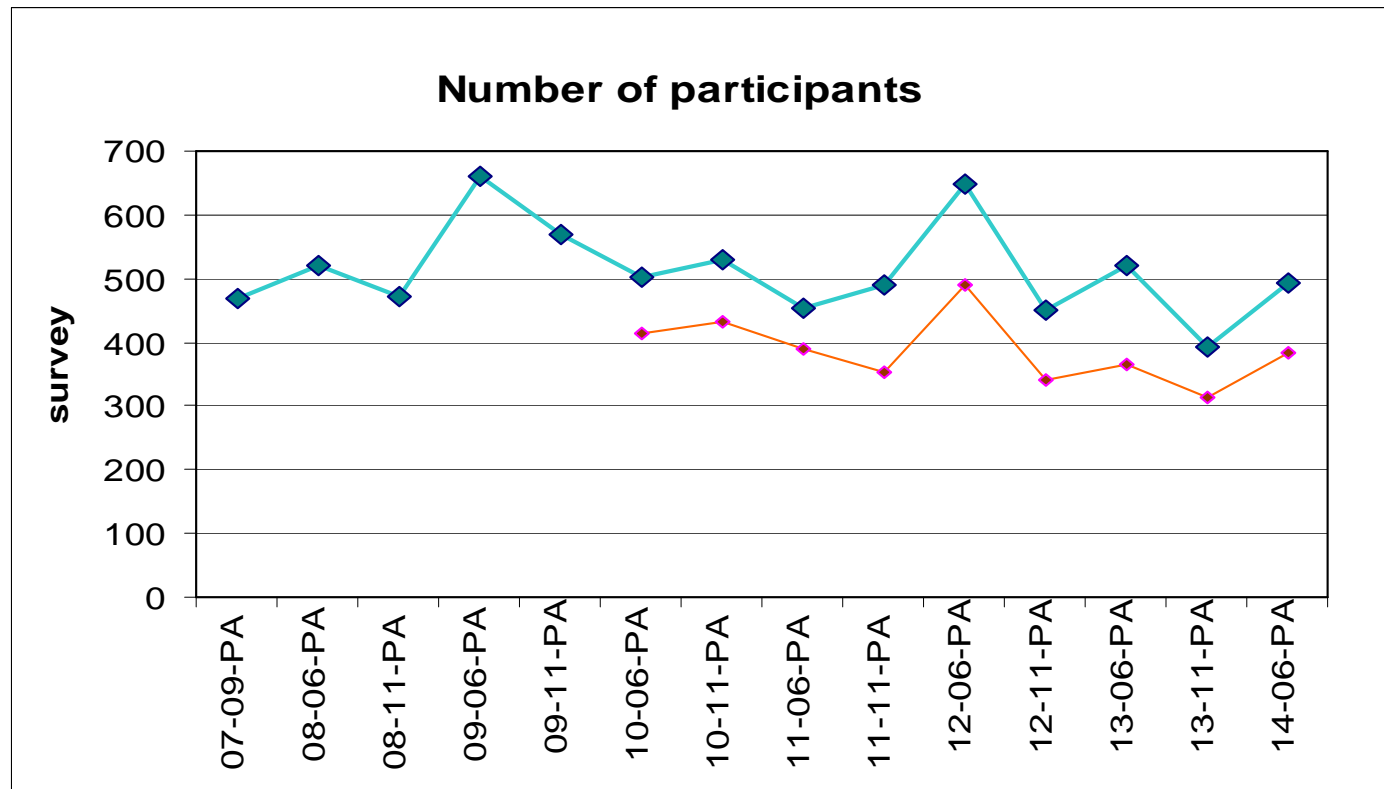
3 languages available dynamically



Statistics

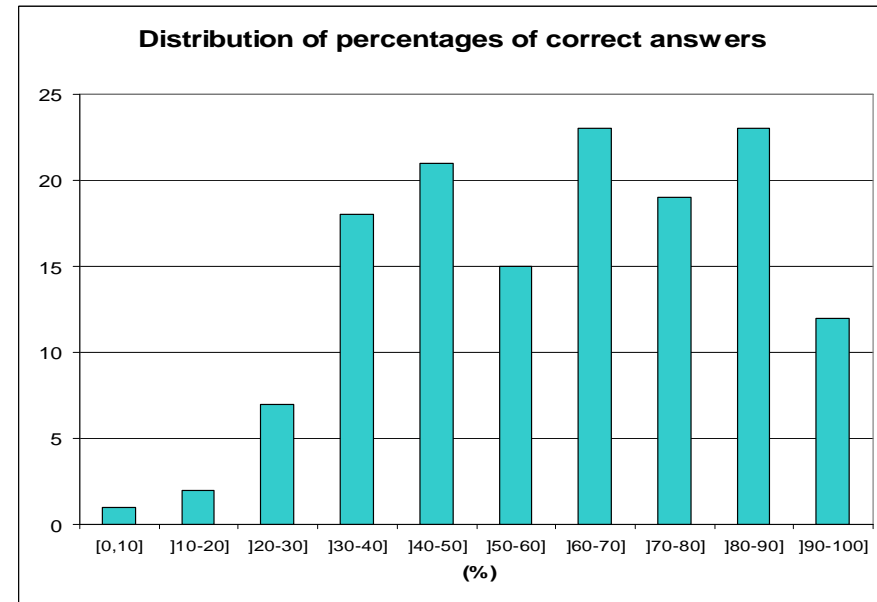
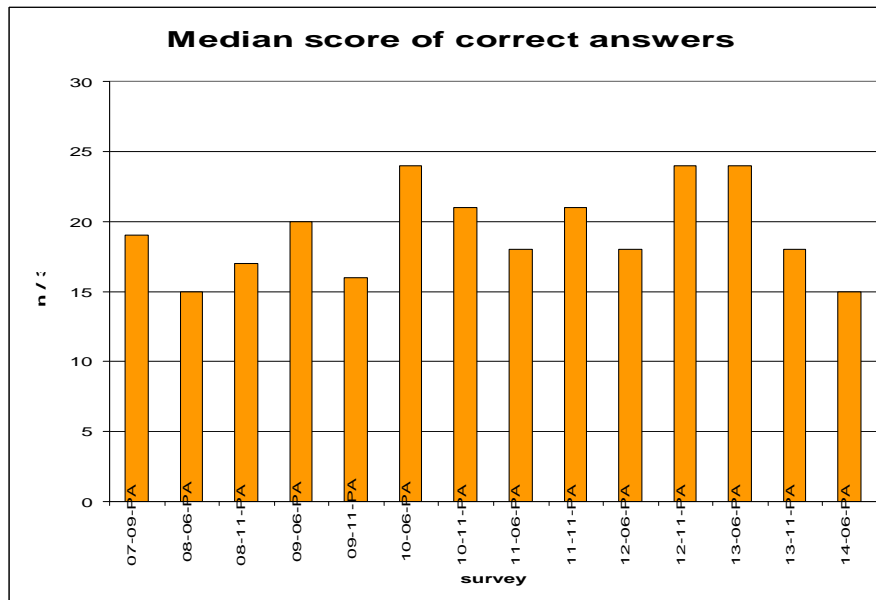
→ average participation (n = 512)

→ participation to 10 questions (n = 387 ≡ 76 %)





Statistics → median score (average 19/30)
→ correct answers distribution





Enhancement ?

- survey 14-06-PA versus previous survey
- standardisation → question singular / plural
→ always 4 choices
- possibility to answer only questions 1 - 5, since 2010



Enhancement ? 6 questions with better scores

| 14-06-PA n = 108 (1-5) n = 384 (1-10) Question n° | correct answers | 07-09-PA n = 469 Question n° | 08-06-PA n = 519 Question n° | correct answers | Difference |
|--|--------------------|------------------------------------|------------------------------------|--------------------|------------|
| 1 | 77% | 1 | | 78% | -1% |
| 2 | 41% | 6 | | 36% | 5% |
| 3 | 80% | 7 | | 99% | -19% |
| 4 | 63% | | 3 | 54% | 9% |
| 5 | 21% | 3 | | 11% | 10% |
| 6 | 47% | | 4 | 57% | -10% |
| 7 | 52% | 5 | | 59% | -7% |
| 8 | 35% | 8 | | 31% | 4% |
| 9 | 60% | 9 | | 19% | 41% |
| 10 | 42% | 10 | | 20% | 22% |



Continuous educational tool → for each actor

- “ FAMH-student
- “ Internal CSCQ staff
- “ Experts (benefits from participant feed-back)
- “ Medical office staff: often the only continuous education
- “ Professional laboratories
 - first meeting to select the choices
 - second meeting to discuss argued answers

Pool of 170 questions-choices / argued answers



Conclusion

- “ Survey available in 3 languages, free of charge
- “ Two participation levels (5 or 10 questions)
- “ Easy tool for submission
- “ Extensive report
- “ High number of participants despite not mandatory
- “ Recognized by FAMH and SSCC as continuing education
- “ FAMH-candidates (can participate free of charge)
- “ Belongs to the accredited domain



Centre Suisse de Contrôle de Qualité
Schweizerisches Zentrum für Qualitätskontrolle
Centro Svizzero di Controllo della Qualità
Quality Control Centre Switzerland

